



Janajyoti Campus

Bhimad-6, Tanahun

Gandaki Province, Nepal

Five Year
Strategic Plan
(2079-2083)
Revised

Table of Content

1	Introduction	1
2	Historical Background	1
3	Assessment of Present Status	2
	Our Motto	3
	Our Vision	3
	Our Mission	3
	Strengths	3
	Weaknesses	3
	Opportunities	4
	Threats	4
	Goal and Objectives	
	Goal 1 To provide quality education.	4
	Goal 2 To facilitate marginalized and educationally back warded students.	4
	Goal 3 To develop the institution as research centre with integration of modern technology.	5
	Goal 4 To improve the image of the campus with internal and external relationship.	5
	Strategic plans	5
3.1	Organizational Structure	6
	Present organizational structure of JC	6
3.2	Governing System	7
3.3	Status of Academic Programs	7
3.4	Human Resource	7
3.5	Student Detail	7
3.6	Present Work load Analysis	8
3.7	Financial Status	8
3.8	Physical Facilities	9
	3.8.1 Infrastructure for Academic Activities	9
	3.8.2 Infrastructure for Administrative Activities	10
	3.8.3 Land Use	10
3.9	Future Course Indicated by Present Scenario	
	3.9.1 Student Statistics	10
	3.9.2 Financial Condition	11
	3.9.3 Academic Programs	11
	3.9.4 Physical Infrastructure	11
4	Action Plan	11
	Five Year Action Plan	12



R. Kaphle

1. Introduction

Higher education in Nepal is expanding rapidly in response to the ever increasing aspiration of people for quality higher education. Higher education institutions are being added and students' enrolment in higher education institutions is increasing every year. With the increasing number of graduates concerns with quality and relevance of higher education programs and the delivering institutions are also growing particularly in view of employability of the graduates and/or their capacity for self-initiatives/entrepreneurships to generate employment. A substantive number of students are going abroad for higher education seeking better quality and relevance. Janajyoti Campus (JC) was established with the active participation of local community including academicians, politicians, intellectuals, social workers, journalists, parents and students of this local community.

2. Historical Background

After restoration of democracy in Nepal, constituent campuses of TU could not meet the demand of quality education in higher education. TU encouraged initiating the higher educational institute and campuses in different parts of the country. As a result sufficient numbers of public (community based) and private higher education institutions (HEIs) have been established in the nation. Janajyoti campus was established in 2007 AD (2064 BS) and located in Bhimad of Tanahun district. It is affiliated to Tribhuvan University and offers bachelor degree programs in Bachelor of Education (B.Ed.) and Bachelor of Business Studies (BBS).

Campus is away from the city hassle and pollution. It stands ecologically tranquil, peaceful, cozy and attractive state. Since its beginning, it has been imparting quality education with plentiful facilities for aspirant. Janajyoti Higher Secondary School (JHS) played an important role to establish the Campus. This school contributed by providing physical features in the beginning and later in 2066 the school contributed 113 ropanis and for developing physical infrastructures of campus.

Janajyoti Campus is spread over 113 ropanis of land, the campus has an own modern building. The campus has spacious classrooms. Each room accommodates 50 students easily and contains well equipped furniture with small medium size resourceful library consisting

S. K. Kaphle

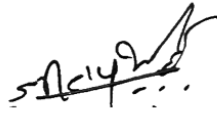
R. Kaphle

of thousands of books, magazines and newspapers of several qualities. University Grant Commission (UGC) has also supported for books, stock materials, furniture and equipment.

3. Assessment of Present Status

JC is an autonomous institution in every respect. However, as a TU affiliated Campus, JC is governed by the TU's academic rules and regulations, curricula and examination. It has own premises of 113 Ropani areas with 3 distinct building blocks. Within these physical infrastructures have 15 teaching faculties, 3 Non-teaching staffs and 320 Students in different programs. JC has offered programs like Bachelor of Business Studies (BBS), and Bachelor in Education (B Ed). It has 2 academic Departments which are Department of education and Department of Management. The required numbers of teaching and non-teaching staff are decided by the campus authority on the basis of demand of head of the departments and coordinators. The selection committee is responsible to recruit the teaching and non-teaching staff. For the purpose of recruitment, notice is published in campus's notice board and also vacancy announcement notice is advertised in local/national newspapers. Written and oral examination are taken and class room observation method is followed for the recruitment of teaching staff and written, oral and practical examination is taken for the recruitment non-teaching staff.

JC has clearly defined its goals, objectives and standards including background information, vision, mission and strategic plans. JC is a community based campus and operates under the management committee elected by campus assembly. Any community people can be the member of the assembly according the rules and regulations of the campus. The campus is a nonprofit and philanthropic organization, devoted to provide quality education to the students from the back-warded and disadvantaged society. The campus aims to bring forth highly qualified, well-disciplined human resource befitting to the global market demand. JC is endeavored to expand and strengthen the academic and job oriented programs with clearly defined practicable plans, programs and implementing strategies.



Our Motto

Quality Education in rural areas with academic excellences

Our Vision

The campus aspires to be a model institution enabling its students' critical thinking, problems solving, innovation as well as devoted learners contribute to their communities, nation and the world.

Our Mission

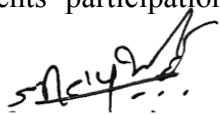
The mission of the campus is to access higher education ensuring research based, students oriented and behavioral personality development with extra-curricular activities.

Strengths

1. Enough / sufficient land
2. Cooperative and collaborative campus management committee (CMC).
3. Subject wise skilled and trained lecturers.
4. Mutual co-operation between students, teachers, guardians and CMC.
5. Appropriate natural friendly working environment.
6. Affordable fees to the general rural population of Nepal.
7. Having facilities of parking, safely compounding and handicapped friendly building.
8. Transparency in economy and information.

Weaknesses

1. Least numbers of students and high dropout ratio.
2. Limit academic programs ie B.Ed. and BBS
3. Weak condition of academic result.
4. Inadequate attendance of students and guardians.
5. Libraries, E-libraries and computer- lab are not sufficient.
6. Inadequate teaching and non- teaching staff.
7. Lack of attractive gardening, sufficient drinking water and play ground to the students.
8. Almost all the faculty members have been confined to classroom teaching. No facilities for research to engage the teachers outside the classrooms.
9. Poor collaboration with governmental sectors.
10. Least students' participation in extra-curricular activities



Signature



Signature

Opportunities

1. The campus has intended to make a research and innovation centre with co-ordination of local levels of this area.
2. The campus has the opportunity to act as major higher institution of this area.
3. New opportunities for providing different job within the country.
4. Conducting master - degree and other technological education as need of the society.
5. Developing national and international playground.

Threats

1. Unclear and unpredictable status of the Tribhuwan University in the context of federal system.
2. Decreasing number of student enrollment under the education and management stream.
3. Formulation of rules and regulation only focusing on government campus neglecting public campus by the government.
4. QAA accredited and proposed Gandaki University, higher educational institution, very short distance of the campus.
5. Lack of enough cooperation with national and international academic institutions.
6. Lack of sustainability management of financial resources
7. Lack of assurance for employability

Goal and Objectives

Goal 1 : To provide quality education.

Objective

1. To offer academic programme as need of the society.
2. To develop the behavioral education.
3. To product competent and qualified human resources.

Goal 2: To facilitate marginalized and educationally back warded students.

Objective

1. To provide quality education to marginalized students.
2. To motivate students through various scholarship.
3. To attract by different extra-curricular activities.

Signature

Signature

Signature



Signature

Goal 3: To develop the institution as research centre with integration of modern technology.

Objective

1. To create infrastructures for research activities.
2. To generate research oriented teaching.
3. To improve administrative efficiency with implication of modern technology.

Goal 4: To improve the image of the campus with internal and external relationship.

Objective

1. To ensure the public participation.
2. To improve external relationship.
3. To build up good image of the campus.

Strategic plans

1. To promote quality teaching
2. To increase the access of student on international language
3. To modernize and advance library service
4. To produce competent and dedicated human resource with high morale for nation building
5. To increase the pass out percentage of student
6. To increase the number of students
7. To increase the attention of society towards campus
8. To increase students participation in teaching learning activities, extracurricular activities
9. To attract merit student, disadvantaged community student and marginalized students in college
10. To Provide facilities
11. To introduce additional programs, technical programs, research oriented and job oriented
12. To enhance and upgrade infrastructures for conducive teaching learning environment
13. To generate additional resources for advancing institution
14. To increase the access of student on advanced knowledge and modern technology
15. To increase the national and international relation of the campus
16. To carry out research oriented activities
17. To increase participation on social issues
18. To increase the resource mobilization capacity of campus

Signature

Signature

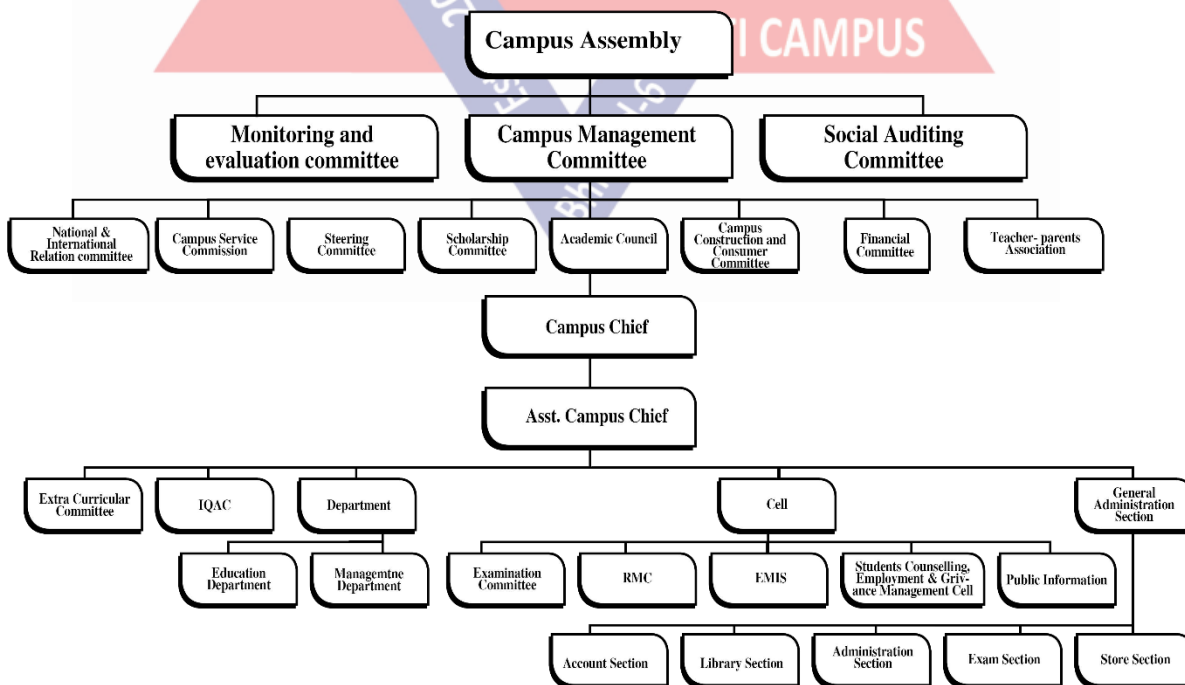


19. To attract more competent and professional human resource towards college programs in campus
20. To keep campus environment clean, safe and education friendly

3.1 Organizational Structure

JC has been running under the Janajyoti campus regulation 2064 (fourth amendment 2076). Accordingly, campus assembly is the apex body having 200 members contributing more than Rs. 15,000 to the campus development fund. The Campus Management Committee (CMC) is the executive body, which is responsible for setting the policies, regulating campus programs and activities. Campus Management Committee comprises of the representatives of stakeholders, teachers, administrative staff, students, parents, local government, and members. Elected person from the general assembly chairs the committee and the campus chief as a member secretary. Campus assembly is responsible to formulate plan and policies and amend it timely as per the requirement of the campus. The Executive Committee is responsible to execute such plan and policies and the day-to-day functions of the campus.

Present organizational structure of JC



Signature



Signature

3.2 Governing System

JC has its own regulation formulated and enacted with the involvement of different stakeholders. Campus assembly has been finalizing and amending it as per the timely requirements of the campus. Campus assembly has been electing the Campus Management Committee (CMC). CMC has been appointing the administrative executives such as Campus Chief, Assistant Campus Chief etc. Different committees and cells also are formulated from CMC to make the operational and governing system transparent, accountable and responsible.

3.3 Status of Academic Programs

JC has been running different academic programs under education and management department. There are 2 departments opting 6 different subjects. The campus has been running its programs Bachelor levels in the morning shifts. All the programs are launched with the local initiation with the funds raised from the student fees.

3.4 Human Resource

Altogether 15 faculty members and 2 administrative staff are serving for this campus at different capacities. Within the faculties in which 8 are full time, 7 are part time teacher out of 8 full time faculty members 4 are lecturers. All administrative staffs are full time.

3.5 Student Detail

Level	Academic Programs	Students Enrollment											
		Year 075/76			Year 076/77			Year 077/78			Year 078/79		
		M	F	T	M	F	T	M	F	T	M	F	T
Bachelor	B.ed.												
	1 st year	1	19	20	11	45	56	13	59	72	3	32	35
	2 nd Year	5	12	17	1	20	21	5	33	38	7	45	52
	3 rd Year	3	19	22	3	10	13	1	18	19	4	29	33
	4 th year	2	10	12	2	17	19	3	8	11	1	17	18
	BBS												
	1 st year	15	27	42	31	45	76	16	58	74	17	44	61
	2 nd year	11	34	45	18	24	42	22	38	60	7	43	50
	3 rd year	6	26	32	8	29	37	12	30	32	18	27	45
4 th year	3	24	27	4	18	22	6	26	32	10	16	26	
Total		46	171	217	78	208	286	78	260	338	67	253	320

Signature

Signature



3.6 Present Work load Analysis

The total existing workload under the two faculties Management and Education in I in JC is 312 periods per week. Considering the total number of full time teaching faculties (8) of JC, the existing work load per full time faculty is 24 period per week. In addition, JC has employed 7 part time teachers in the programs. These facts indicate the full time teachers are overload.

3.7 Financial Status

Cost recovery is the national policy in higher education (NPC). Accordingly, TU also has emphasized on the internal resource generation to recover the operating expenditure of its constituent campuses. TU has granted the constituent campuses the free hand to mobilize the local resources. Different categories of academic institutions such as fully government funding, community based, private etc. are into existence in Nepal. So, community based campuses like JC generate internal funds by mobilizing their available resources and imposing additional charges to the students. This campus also has raised the funds by mobilizing its local resources such as, rental revenue, water boring, levying development fees to the students enrolled in the academic programs approved by the Campus Management Committee, and raising additional fees to the students to TU affiliated programs with internal resources. In addition, the campus doesn't directly receive the funds from Nepal Government for specified purposes. Thus, the revenue of the campus is classified into internal sources and external sources. External sources include the funds received from the subsidies and grants from UGC and national and international donors. Similarly, internal sources are classified basically into two categories—student fees and rest from different sources.

The major internal source of income to the campus is student fees. Percentage of revenue raised from internal sources ranges from 59.97 percent to 73.48 percent during the analysis period (Fiscal Year 2076/077 to 2078/079). In most of the years, the contribution of internal sources of revenue of the campus remains within 73.48 percent. The percentage of revenue raised from internal sources was relatively high in 2078/079.

3.8 Physical Facilities

The campus is enriched with one class-room building, one administrative as well as library building, and one canteen.

3.8.1 Infrastructure for Academic Activities

Out of 1 classroom building, 11 rooms covering 5400 square feet areas are available for 320 students at the rate of 16.87 square feet per student. This is the capacity of students estimated for comfortable accommodations in one shift though 320 students are accommodated in the present situation. Regarding library facilities the campus has resourceful library in which one Assistant Librarian, 1 is rendering their services from morning and day shifts. General Reading room's capacity for students in ground and first floor is around 35 students at a time, E-resource Centre capacity is for 6 students at a time. At present the total number of text books is 1,000, reference books are 2,100 journals available in different subjects are 20, and magazines are 4. Different types of research reports are found.

3.8.2 Infrastructure for Administrative Activities

In order to support academic activities, JC has been facilitated with different infrastructures such as administrative building, academic building, auditorium and seminar halls, cafeteria, and the rest rooms. Administrative building is the main component which administers the entire academic and administrative activities of the campus.

3.8.3 Land Use

JC Campus covers 113 ropani land area at bhimad -6. Most of the buildings are constructed in planned way by covering minimum area of scarce land. Administrative building attached with the classroom buildings. At present, the campus has enough available space for expansion of classroom buildings.

3.9 Future Course Indicated by Present Scenario

3.9.1 Student Statistics

Both dropout rate and results of annual examination indicate that quality of education imparted by JC is deteriorating year by year. Similarly, enrolment growth program indicates

that it will have adequate number of students at the level provided the delivery of quality education and proper management of available resources.

3.9.2 Financial Condition

Though cost recovery rate is increasing year by year, it will not have adequate financial resources to finance the capital expenditure and maintain the academic infrastructure and support services. Operation grant provided by Nepal Government is not sufficient even to cover the stationary expenses only. It indicates that campus will meet financial crisis in future if it does not mobilize either its own local resources or receive more operation grant from Nepal Government or any other supporting agency.

3.9.4 Academic Programs

Academic programs B.Ed. and BBS conducting of the campus are appropriate for the fulfillment of related human resource of this locality. The campus is planning to conduct bachelor semester programs, Master degree and other technical subjects are need to initiate according to demand of this area.

3.9.5 Physical Infrastructure

The campus has adequate physical facilities to run the present programs and it is underutilized in day shift. But most of the available physical facilities infrastructures are made up traditionally due to the want of the budget and poor property management as well as immediate requirement at that time in the past. Available physical facilities indicate that infrastructure for academic programs may meet the need of the campus if it is properly managed and maintained but land to built up additional buildings as well as sports ground are not sufficient.

4.0 Action Plan

An action plan is a document that lists what steps must be taken in order to achieve a specific goal. The purpose of an action plan is to clarify what resources are required to reach the goal, formulate a timeline for when specific tasks need to be completed and determine what resources are required.

1. Expansion and construction of Physical infrastructure

Goal: To facilitate the teaching and learning by constructing facilitated building.

Objectives:

- To complete administrative and library building.
- To conduct Masters level program.
- To create suitable environment for study.
- To construct ICT friendly library.
- To upgrade the canteen.
- To manage the pure drinking water and clean restroom.
- To construct playground.
- To create a clean academic environment by constructing a garden and waiting room with in the campus premises.

SN	Activities	Present Status	Estimated Time and cost of Proposed Program					Total Estimated Time and cost	Sources of Agencies	Responsibilities	Achievements
			2079	2080	2081	2082	2083				
1	To complete administrative and library building.	Under construction	1200000					1200000	Bhimad Municipality		– To facilitate the administrative function – To provide the classes of master's degree. – To provide the pure drinking water, restroom and playground. – To study in the library with ICT facilities. – To study in peaceful
2	To construct academic building			5000000	8000000	5000000	18000000				
3	To Purchase furniture for library	Available	400000	100000	200000	100000	200000	1000000	Bhimad Municipality, Campus itself & UGC		
4	To purchase furniture for class room	Available	350000		100000		200000	650000			
5	To upgrade the canteen	Canteen	150000			100000		250000	Bhimad Municipality		

6	To expanse the pure drinking water and clean restroom	Available				500000		1000000	Donor Agency		academic environment.
7	To construct playground		80000	40000				120000	Internal source		
8	To create a clean academic environment by constructing a garden and waiting room with in the campus premises.		800000	300000	200000	100000	500000	1900000	Rishing Rural Municipality		
9	Office	Available		150000	50000			200000			

2. Improvement of Educational Quality

Goal: To make the teaching activities result oriented

Objectives:

- To produce qualified and competitive manpower
- To provide theoretical and practical knowledge
- To conduct workshop and seminar

SN	Activities	Present Status	Estimated Time and cost of Proposed Program					Total Estimated Time and cost	Sources of Agencies	Responsibilities	Achievements
			2079	2080	2081	2082	2083				
1	To conduct workshop and seminar		30000	32000	33000	35000	35000	165000	Campus itself		. The students will achieve theoretical and practical knowledge
2	To conduct orientation program		15000	18000	20000	21000	21000	95000			
3	To use ICT as a instructional material	Just beginning		100000	100000		100000	300000			. The students' final result will be improved

4	To conduct internal examination and remedial class	Just beginning	50000	60000	60000	60000	280000			. The teacher and students will be encouraged in research activities.
5	To conduct computer training		25000	30000	30000	30000	35000	150000		
6	Purchase of Book	Available	180000	100000	120000	100000	80000	580000		

3. Institutional development and governance

Goal: To grow the campus image by the production of competent human resource.

Objectives:

- To conduct the campus according to campus rules and directory.
- To clarify the educational, administrative and financial aspect.
- To provide the capacity enhance for the teaching and non-teaching staff.

SN	Activities	Present Status	Estimated Time and cost of Proposed Program					Total Estimated Time and cost	Sources of Agencies	Responsibilities	Achievements
			2079	2080	2081	2082	2083				
1	To formulate and amendment the rules and regulations of Campus Management Committee, Monitoring and Evaluation Committee and Social Audit Committee from Campus Assembly.	Available	50000	50000	50000	60000	60000	270000			. On the basis of collected suggestions, the campus rules and plans will be constructed for the development of campus.

2	To formulate different sub-committee, pass their annual plan and implement them.		30000		40000	40000	180000			. Administrative and financial aspect will be reliable.
3	To activate the Campus Management Committee, Monitoring and Evaluation Committee, Social Audit Committee, Financial Committee, Construction Committee and other committee	Available	20000	20000	30000	30000	90000	190000		. The roadmap of campus will be achieved for the construction and implementation of work plan .
5	Observation tour		50000	60000		80000	190000			

4. Development and management of Human Resource.

Goal: To preserve the competent and capable human resources and provide the opportunities of personality development.

Objectives:

- To enhance the capacity of teaching and non-teaching staff.
- To develop the competent and capable human resources.
- To secure the job of the employees.
- To attract the competent and capable human resources.
- To provide the effective teaching learning activities.

SN	Activities	Present Status	Estimated Time and cost of Proposed Program					Total Estimated Time and cost	Sources of Agencies	Responsibilities	Achievements
			2079	2080	2081	2082	2083				
1	To manage the 50% full time faculties.	Available						0			

2	To conduct the orientation and capacity enhance program.		40000	45000	45000	215000			
3	To provide provident fund and gratuity to the permanent teaching and non-teaching staff.	Partially available	50000	95000	60000	65000	70000	340000	. The students result will be increased. . The personality of teaching and non-teaching staff will be developed.
4	To provide study leave and further support to the teaching and non-teaching staff.		100000	150000	200000	250000	200000	900000	. With the high morale of teaching and non-teaching staff, the educational quality will be improved.
5	To provide reward and punishment to the teaching and non-teaching staff according to their performance.	Just beginning	5000	5000	6000	6000	6000	28000	

5. Research and Publication.

Goal: To develop the campus as a research Centre.

Objectives:

- To provide the opportunities for the capacity enhancement of teaching and non-teaching staff.
- To provide the effective teaching learning activities.
- To provide the opportunities of different research activities.
- To inform all activities of the campus to the community through the regular publication.

SN	Activities	Present Status	Estimated Time and cost of Proposed Program					Total Estimated Time and cost	Sources of Agencies	Responsibilities	Achievements
			2079	2080	2081	2082	2083				
1	To continue the publication of JYOTIPUNJ, research oriented journal and prospectus.	Available	350000	350000	350000	350000	350000	1750000			. Campus rule, program and achievement will be familiar with the stakeholder. . The research oriented performances of teaching and non-teaching staff will be improved. . It will be supported for research and mini research.
2	To conduct research workshop.		50000	50000	50000	50000	50000	250000			
3	To begin mini research	Just beginning	40000	60000	60000	70000	80000	310000			

6. Access, Enhancement and Development of Students

Goal: To develop the access and enhancement for the economically backward, dalit, janajati and minority students.

Objectives:

- To increase number of students.
- To provide the quality education to the students of rural area.
- To increase the scholarship and other facilities for the students.
- To provide all round development for the students.

SN	Activities	Present Status	Estimated Time and cost of Proposed Program					Total Estimated Time and cost	Sources of Agencies	Responsibilities	Achievements
			2079	2080	2081	2082	2083				
1	To provide the scholarship for the economically backward students, competent, dalit, Janajati and minority students	Available	250000	270000	280000	290000	380000	1470000			. The economically backward students, competent, dalit, Janajati and minority students admission rate will be increased.
2	To inform the students about the campus through the welcome program for the new admitted students.	Available	15000	16000	17000	18000	19000	85000			. The students will be familiar about the rules and regulation of the campus.
3	To develop students' personality through extra-curricular activities	Available	80000	80000	85000	85000	90000	420000			. The all-round development of the students will develop their inherent qualities which make them creative, competitive, and moral beings.
4	To solve the students' queries	Available	25000	25000	26000	26000	27000	129000			. The student's problems will be solved in time which make them encourage.

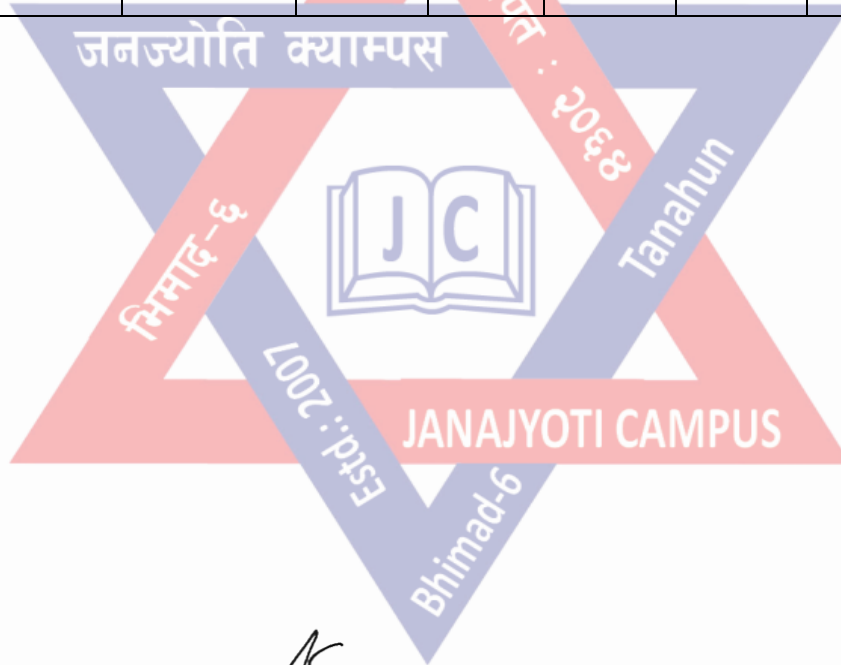
7. Expansion the Relationship with Community

Goal: To develop the campus as a community's property

Objectives:

To inform the administrative, academic, financial and other activities of the campus to the community and develop the campus from the feedback of the community.

SN	Activities	Present Status	Estimated Time and cost of Proposed Program					Total Estimated Time and cost	Sources of Agencies	Responsibilities	Achievements
			2079	2080	2081	2082	2083				
1	To take the view of community for academic, financial, physical and other activities of the campus for running the academic programs of the campus.	Available	30000	32000	32000	35000	38000	Every year	Campus itself	Public information committee	. institutional development and expansion of the campus and increasing of the number of students . to produce the quality manpower as expected the community



Handwritten signature

Handwritten signature